



PUMPTEC

WHERE INNOVATION FLOWS

Engineered
for Precision
Pressure
and Flow



Consistent output and flow designed for the injection of nutrients or chemicals into irrigation systems.

Agricultural applications require reliable and precise control for chemical spraying and fertigation.

That's why Pumptec designs custom pump systems tailored to your exact specifications for use with herbicides, pesticides, or other solutions. Our plunger-style pumps have been engineered to overcome issues common to diaphragm pumps, such as inconsistent pressure and short operational life.

With Pumptec custom pumps, you can expect:

- Consistent pressure at the nozzle
- Flow rate accuracy for better results, cost savings, regulatory compliance
- Higher levels of reliable, durable performance.

As part of a sprayer system, our electric pumps deliver precise application rates and consistent output flow while eliminating the noise, air pollution, carbon monoxide hazards, fuel costs, and maintenance issues of gas-powered systems.

For the injection of fertilizers, acids, soil amendments, and other water-soluble products into an irrigation system, our pumps make a perfect choice for fertigation. With operations up to 90 GPH, our chemical resistant pumps deliver accurate injection rates, maximum dependability and long-term reliability. Our efficient design also offers a low average amperage draw for the solar powered systems.

For your specialty agricultural pump needs, we can engineer a solution for you.

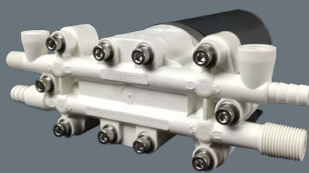
Pumptec Advantages

Pumptec designs reliable low flow, high-pressure plunger-style pumps and pump systems, precisely engineered to meet your exact performance specifications.

- Precise flow rates with consistent pressure at the nozzle
- Compact, efficient, electric-powered pumps
- Rugged, chemical-resistant, durable construction
- Long-life, low-maintenance, serviceable design
- Personalized service and support.



Model 114C Acid Pump



Model 350U Series

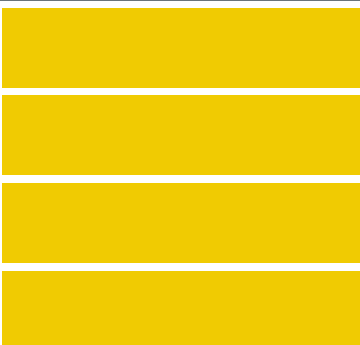


Model 114T Spray Basic System



Model 314 Series

Coming Soon



700 McKinley Street NW
Anoka, Minnesota 55303
763.433.0303

pumptec.com

Pumptec Pumps provide durable, reliable and affordable performance for a wide range of agricultural equipment applications.

Provides durable, chemical-resistant operation in a compact design.

Pressure	50 PSI	Body	Chemical Resistant Poly
Flow	90 GPH	Seals	Viton
Ports	Vertical or Horizontal	Plunger	Ceramic
Dimensions	8.63" L x 8.06" W x 3.79" H	Power	12 VDC

Provides versatility of pressure and control in a compact design.

Pressure	1000 PSI	Body	Anodized Aluminum Head
Flow	3 GPM	Plunger	Stainless Steel
Dimensions	8.48" W x 2.75" L	Power	12 VDC

Provides the perfect flow and pressure to reach greater distances in a small chemical-resistant pump. System includes built-in pressure regulator with internal bypass.

Pressure	250 PSI	Body	Nylon Head
Flow	1.5 GPM	Plunger	Stainless Steel
Dimensions	8.06" W x 3.79" H x 8.63" L	Power	12 VDC

Provides versatility of pressure and control in a chemical-resistant pump design.

Find out more

For more information, please contact:

Shawn Glover
PH: 866-857-7078
sglover@pumptec.com

Bret Strange
PH: 763-205-8350
bstrange@pumptec.com