

## The 207V Offers:

- Long Life
- High Pressure
- High Efficiency
- Serviceability
- Design Flexibility
- Enhanced Priming Capability



## Performance and Reliability in a Compact & Flexible Design

Features

### EFFICIENCY

The plunger type design is the most efficient possible to pressurize water. PUMPTEC™ efficiency produces up to 20% more pressure or flow for a given power input compared to some competitor's pumps.

### MAINTENANCE & SIMPLICITY

Factory lubricated for maintenance free performance. The only tool needed to completely disassemble the pump to its basic components is a simple hex wrench.

### DURABILITY

Durability results from exclusive use of premium materials. All metallic "wetted parts" (except body) are stainless steel. The extruded aluminum pump body is nearly indestructible compared to pumps made of castings. Specialized coatings available for high and low pH applications.

### VERSATILITY

Flow and pressure can be optimized to exactly match power input to nozzle size by customer selection of the precise eccentric offset.

Specifications

### 207V: Double Acting Simplex Plunger Pump

Flow	to 1.25 GPM
Pressure	to 800 PSI
Temperature	to 120°F
RPM (max)	1800
Inlet	3/8" F
Outlet	3/8" F (1/8" & 1/4", optional, special order)
Seals	V-Packing

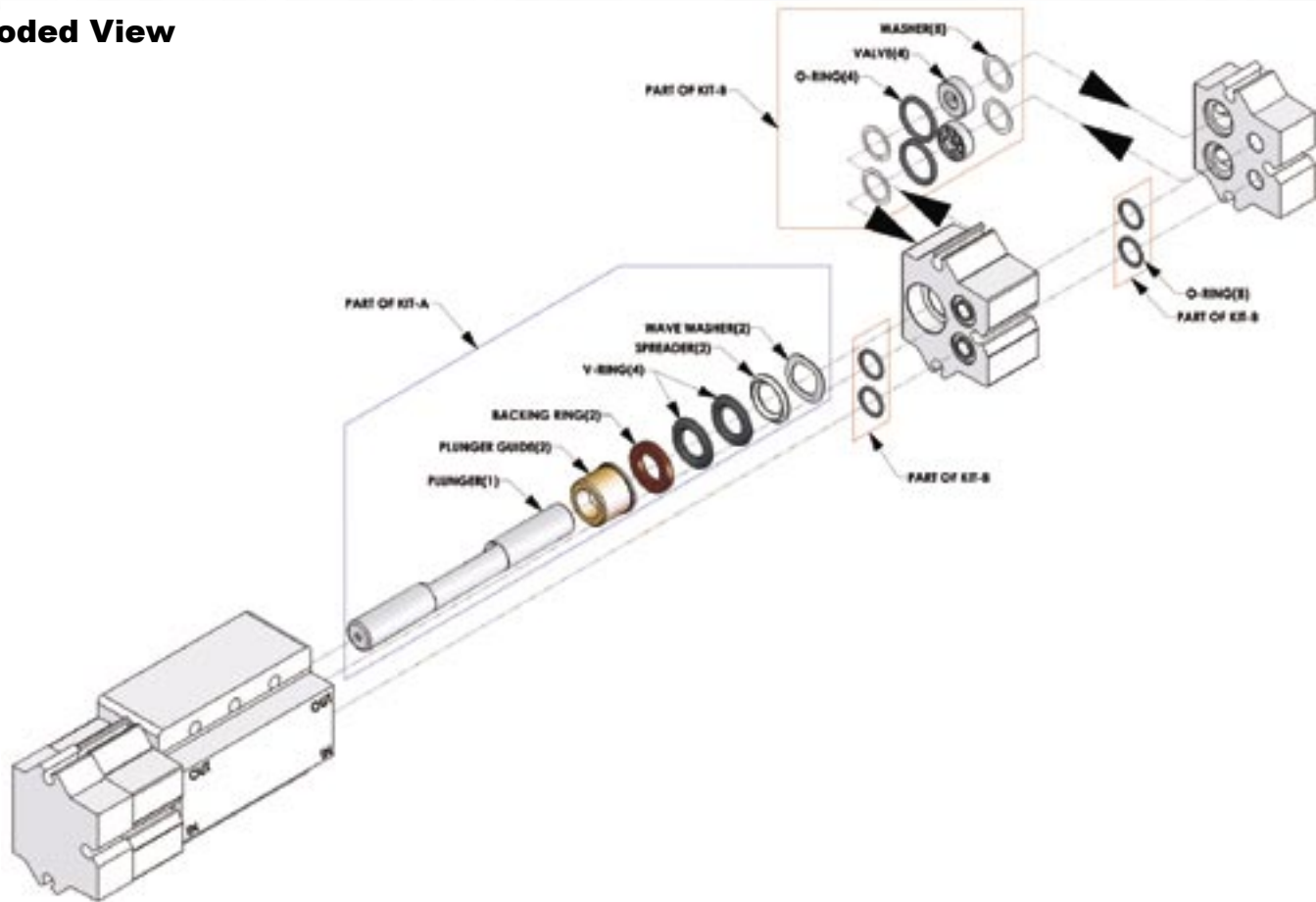
### Materials

Body	Anodized Aluminum
Plunger	Stainless Steel
Valves	Stainless Steel
Seals	Proprietary NBR
Fasteners	Stainless Steel

### Available Motor Voltages

12 VDC	100 VAC
24 VDC	120 VAC
36 VDC	230 VAC

## Exploded View



### Pump Dimensions

Pump Only 8.75"L x 3"W x 2.25"H

### Pump Weight

5 lbs.

Parts List

Ref. #	Part Number	Part Name
--------	-------------	-----------

Kit-A 10003 Plunger & Seals, 207V, Buna

Kit-B 10022 Valve & Seals, 207V, Buna

### Pump with Mounting Bolts

60065 207V pump only, Buna, M-Valve, 4-3/8" ports, Gold  
\*cam bearing & motor not included